



Council of Architecture
Ministry of Education, Government of India



**Green Rating for
Integrated Habitat
Assessment**

GRIHA COUNCIL'S IDEA DESIGN COMPETITION

निर्माण

FOR THE 17TH GRIHA SUMMIT

Conducted by Council of Architecture, India

IMPORTANT DATES

Registration start date	16th September 2025, 12:00 pm
Registration end date	26th September 2025, 07:00 pm
Submission deadline for concept note	3rd October 2025, 07:00 pm



We invite participants to design an **office building** situated in any **one of India's five climatic zones**



Shortlisted participants will be notified and required to submit their **Final Designs** by **24th October 2025**



Contribute to the growing body of knowledge on climate-responsive architecture

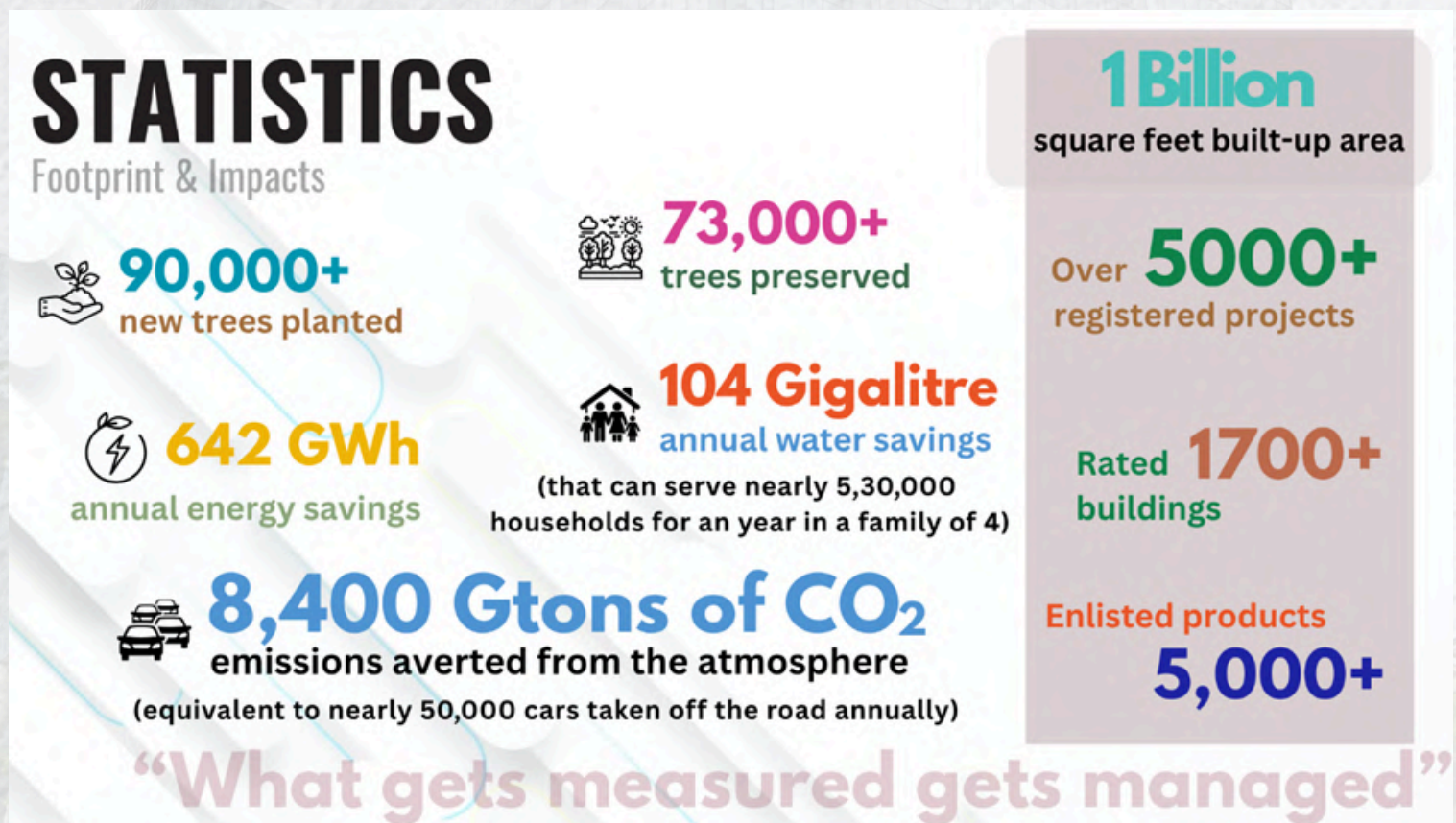
www.coa.gov.in



About GRIHA Council

Green Rating for Integrated Habitat Assessment (GRIHA) Council is an autonomous, not for profit society jointly set up by The Energy and Resources Institute (TERI) and Ministry of New and Renewable Energy (MNRE), Government of India to promote and administer the development of sustainable buildings and habitats in India. GRIHA Council is recognized as the 'National Rating System for Green Buildings in India'.

GRIHA Council evaluates the environmental performance of a building holistically over its entire life cycle, thereby providing a definitive standard for green buildings and sustainable habitats. GRIHA attempts to minimize a building's resource consumption, waste generation, and overall ecological/environmental impact by comparing them to certain nationally acceptable limits / benchmarks.



Over the years, GRIHA Council has been hosting its annual summits to deliberate on issues of national discourse in association with distinguished entities from national and international spheres, encompassing government bodies, industry partners, multilateral and bilateral organizations, academia and building practitioners. The past summits had been designed on themes such as 'Accelerating Climate Action in the Built Environment', 'Empowering Sustainable and Resilient Communities', 'Towards Net Positive Habitats', 'Restoring Green Economy' and 'Rejuvenating Resilient Habitats'



THE 17TH GRIHA SUMMIT

The 17th GRIHA Summit is scheduled to be held on **3rd - 4th November 2025** at India Habitat Centre, Lodhi Road, New Delhi, India on the theme **‘Innovate to Act for a Climate Resilient World’**. As the urgency for climate action intensifies, traditional approaches, while foundational, are not sufficient considering the pace and complexities of the challenges ahead. Innovation must be the driving force in shaping a resilient future across sectors and scales. It must steer the next phase of global, national and regional efforts, making climate action inclusive, resilient and sustainable.

Advancing the idea to augment the development of sustainable habitats and resilient communities at the regional levels in the country, the GRIHA Council has already organized the GRIHA Regional Conclave in Bengaluru. Regional Conclaves are also planned to be held in Bhopal, Kochi and Ahmedabad within this fiscal year.

COMPETITION CONDITIONS :

Designing for a sustainable future

As a part of the 17th GRIHA Summit, GRIHA Council is organizing an idea design competition **‘Nirmaan’**.

This design competition invites participants to design an **office building** situated in **one of India’s five climatic zones** — Hot-Dry, Warm-Humid, Composite, Temperate, or Cold. Participants must prepare a physical model along with a detailed analysis demonstrating how **passive design strategies** can be effectively implemented to address the unique climatic conditions of their chosen zone.

The primary objective of the competition is to explore how architectural design can adapt to different climatic contexts in India, emphasizing innovative, sustainable approaches that promote both occupant comfort and energy efficiency. Designs should reflect a clear understanding of local materials, construction techniques, and cultural context, while leveraging modern technology and best practices in sustainable building design.

Through this competition, participants will not only demonstrate their technical and creative skills but also contribute to the growing body of knowledge on climate-responsive architecture — paving the way for buildings that are both adapted to their environment and built for a sustainable future.

Scope :

1. Climate-Responsive Design :

Showcase the application of appropriate passive design strategies suited to the selected climatic zone. These may include — but are not limited to — building orientation, natural ventilation, daylighting, shading devices, thermal mass, material selection, and landscape integration to enhance thermal comfort and energy efficiency.

2. Zone-Specific Solutions :

Clearly illustrate how different passive strategies are adapted for the chosen climatic zone :

- **Hot-Dry Zone:** Emphasize heat gain control, evaporative cooling, and thermal mass.
- **Warm-Humid Zone:** Prioritize cross ventilation, shading, and moisture control.
- **Composite Zone:** Combine strategies suitable for varying seasonal conditions.
- **Temperate Zone:** Focus on balanced heating and cooling needs with seasonal adaptability.
- **Cold Zone:** Highlight heat retention, solar gain, and protection from cold winds.

3. Exhibition Opportunity :

Shortlisted entries will be invited to showcase their designs at the 17th GRIHA Summit, providing a platform for wider exposure, interaction with experts, and peer learning.

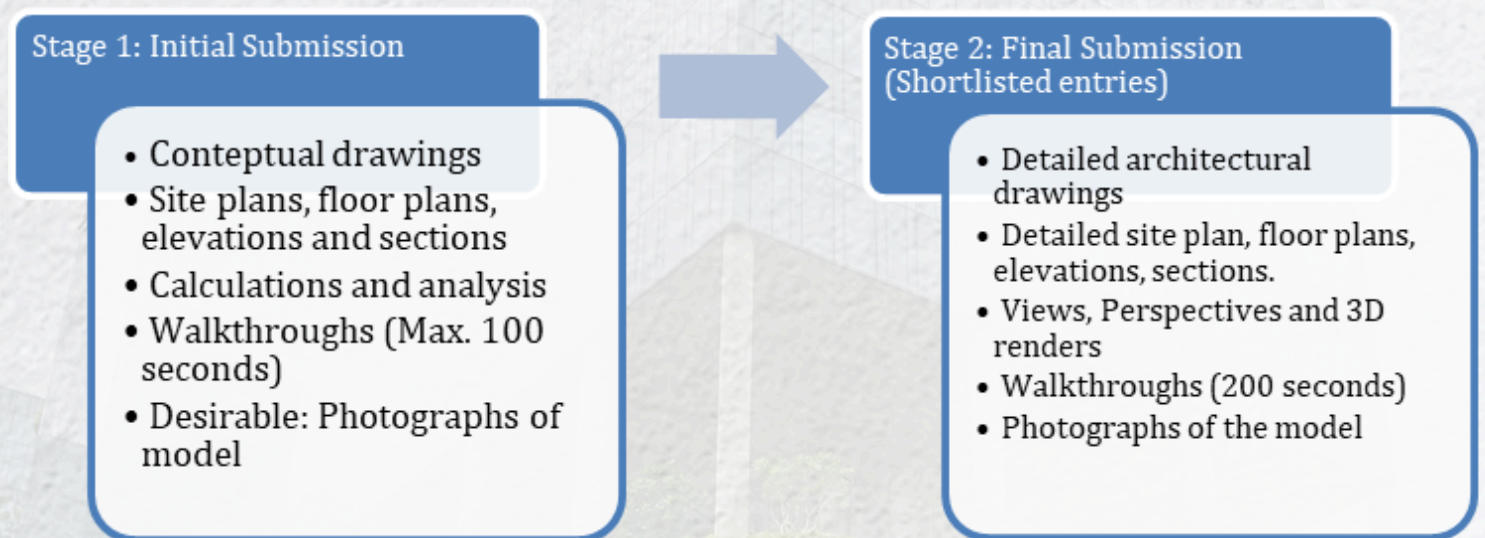
PROJECT SPECIFICATIONS :

- Typology: Office building
- Site area: 1 Acre
- Volume: 6000 to 10,000 cubic meters

Note :

There are no additional restrictions for the project; however, the team must ensure that the design achieves a total built volume between 6000 to 10,000 cubic meters through appropriate design interventions.

Submission Requirements :



Stage 1 : Initial Submission

All participants must submit the following:

1. Design Documentation - including but not limited to :

- **Conceptual drawings:** site plan, floor plans, elevations and sections.
- **Analytical content:** climate analysis (chosen climatic zone — Hot-Dry, Warm-Humid, Composite, Temperate, or Cold — along with temperature range, solar path, wind patterns, humidity levels, etc.).
- **Calculations and performance analysis:** relevant design and environmental performance calculations.
- **Passive design strategies:** site planning, building orientation, shading, natural ventilation, daylighting, thermal massing, and material selection in response to the specific climate.
- **Sustainability outcomes:** anticipated occupant comfort improvements, reduction in energy demand, and resource efficiency measures.

2. Visual Content :

- A walkthrough video of maximum 100 seconds.
- Photographs of the physical model (optional/desirable but not mandatory).

Stage 2: Final Submission (For Shortlisted Entries)

Shortlisted participants must submit the following for final evaluation and exhibition:

1. Detailed Architectural Drawings and 3D Visualizations :

- Site Plan showing building placement, orientation, landscape features, and contextual response.
- Floor Plans illustrating spatial layout and integration of passive design elements.
- Elevations and Sections demonstrating how passive strategies are implemented (e.g., shading devices, ventilation pathways, insulation details).
- High-quality renders showing exterior views, key passive design features, and representative interior spaces demonstrating daylighting and ventilation strategies.

2. Physical Model :

- A working physical model at an appropriate scale to visually communicate the building's form, orientation, and highlights passive design strategies.

Judging Criteria :

- 1. Climate Responsiveness:** How effectively the design demonstrates a clear understanding and application of passive design strategies suited to the selected climatic zone.
- 2. Innovation and Sustainability Impact:** Creativity and effectiveness of the proposed passive solutions in improving occupant comfort, reducing energy demand, and promoting sustainability.
- 3. Design Quality and Functionality:** Overall architectural quality, including aesthetic appeal, functional layout, and how well the design integrates climate-responsive features without compromising usability.
- 4. Clarity of Representation:** Quality and effectiveness of the physical model, drawings, and visualizations in communicating the passive design strategies and climate-responsive features.

Awards:

Winner 1

Cash prize of INR 75,000 + Trophy + Certificates of achievement + Featured publications.

Winner 2

Cash prize of INR 50,000 + Certificates of achievement

All shortlisted participants will also get a complementary entry pass to the 17th GRIHA Summit and a chance to join our summit sessions.

Eligibility:

The competition is open to registered architects, and architecture students, who may participate in teams of up to five members. Teams may consist entirely of professionals, entirely of students.

General Guidelines:

- All the stage wise entries are to be submitted at https://ecoa.in/samarthaya/public/award_details/w2j
- Late submissions will not be entertained.
- All entries will be evaluated by a jury. Decisions by jury will be final.
- All shortlisted entries shall be called to present their submissions during the 17th GRIHA Summit.
- Travel cost and stay arrangements will have to be borne by the participants themselves.
- Participants must arrange for safe transport and display of their models at the Summit venue; India Habitat Centre, Lodhi Road, New Delhi.
- All entries **must be innovative and original.**
- If you have any questions or need further information, please write to us at: events@grihaindia.org.

IMPORTANT DATES:

Registration start date	16th September, 2025
Registration end date	26th September, 2025
Submission deadline for concept note	3rd October, 2025
Announcement of shortlisted entries	15th October, 2025
Submission deadline	24th October, 2025
Final design showcase and model exhibition in IHC	3 rd and 4 th November 2025, Monday & Tuesday

Design Submission:

The submission should have a **Concept note covering all aspects as mentioned** above and a 3D walkthrough along with following details in **A4 size**:

- Design should showcase the application of appropriate **passive design strategies** and energy efficient active design measures suited to the **selected climatic zone**. These may include — building orientation, natural ventilation, daylighting, shading devices, thermal mass, material selection, and landscape integration to enhance thermal comfort and energy efficiency.
- Concept Designs represented through 3D videos.
- Documentation in support of usage of eco-friendly, recyclable or locally available materials along with usage of local traditional and architectural style.
- 03 nos. each A2 sized drawings (42 x 59.4) in Landscape format (Plans, Elevations, Sections or any other detail to explain design concept and softcopy in PDF format).

Competition Process :

The competition will begin with a formal announcement made by the GRIHA, on its website, and on its social media platforms and by CoA on their website.

All intending competitors will be required to register on the link provided on GRIHA's/ COA's website to clear their eligibility and would be assigned a Unique Identity Code to ensure their anonymity for the ensuing first stage. Queries will also be answered during this time. All communications should be made with assigned code only.

The entries should be presented with a level of detail appropriate to the character as a design concept presentation.

Submission Criteria :

- 1.All entries are to be in English only.
- 2.The anonymity of the entrants is to be ensured. The architect's name or participant's name should not be mentioned in any of the submission documents, else the entry shall be summarily rejected.
- 3.Each document to mention the reference code received during registration on the bottom right corner.
- 4.Submission can be done in PDF only along with Concept Note.

1.10.2. The medium of expression should be mostly drawings, illustrations and 3D videos with only explanatory notes, as required. Soft copy (in PPT or PDG format).

1.10.3. Entries submitted by the participants for the purpose of this Competition will not be returned by GRIHA Council.

Intellectual Property Rights and Confidentiality

- The Intellectual Property Rights of the ideas / concepts and the submitted design shall vest with the author, however, GRIHA Council shall have the right to use the ideas / concepts and the submitted design(s) by the winners, with or without modifications as deemed fit by GRIHA Council, in part or in full.
- The participants shall treat all the information provided by GRIHA Council for the purpose of this design competition to be confidential and shall not disclose the same with anybody without taking prior written permission of GRIHA Council.

- These obligations will remain valid during the tenure and even after the completion of the said Competition.
- GRIHA Council has rights to cancel, extend/reject the Design Competition without any reason at any appropriate time.

Application of Regulations

- Sending of entries by a participant implies that the participant has gone through rules & regulations and guidelines of the competition contained in this competition document and accept the same in toto.
- Decisions, deliberations, opinions & proceedings of the jury shall not be made public or otherwise revealed.
- Jury's decisions shall be final and binding on all participants without appeal and cannot be challenged.

Disclaimers

- GRIHA Council shall not be responsible or liable for any erroneous, damaged, destroyed, lost, late, incomplete, illegible and misdirected Entries, or any damage or loss arising from, connected with, or relating to the Competition, the submission of Entries to the Competition, participation in the Competition, regardless of the cause or any fault by the Organizer or the Jury Panel or any person concerned for whom any of the above mentioned are responsible, and notwithstanding that any of those persons may have been advised of damage being incurred.
-
- GRIHA Council may at its discretion cancel, modify or suspend the Competition. The participants shall not be entitled to any compensation as a consequence of such cancellation, modification or suspension of the Competition.
-
- GRIHA Council, its employees / advisors / representatives or consultants make no representation or warranty and shall have no liability to any of the participants under any law, statute, rules or regulations for any loss, damages, cost or expense which may arise from or be incurred or suffered on account of anything contained in this Competition Document.
-